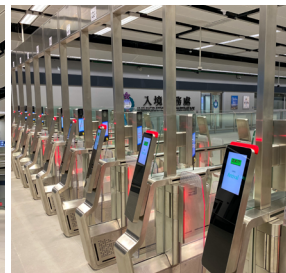
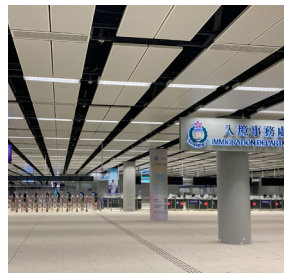
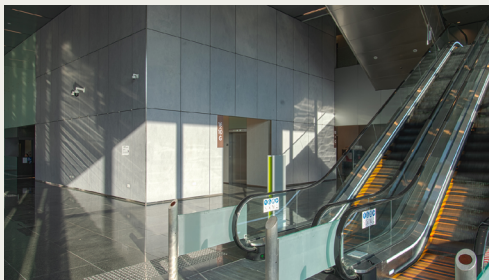


## Recently Completed Projects

### West Kowloon Government Office in Yau Ma Tei

The project comprises the design and construction of the West Kowloon Government Office Building, which is located in Yau Ma Tei not far away from Olympian City, Tai Kok Tsui. The total NOFA is around 50,500m<sup>2</sup> and CFA is 115,000m<sup>2</sup>. It comprises 2 buildings of 15 to 18 storeys with a common basement for car parking, plant rooms and BOH facilities. The 2 buildings provide office accommodations for BD, TD, CEDD, LandsD, GPA, SWD, DH, LCSD and EMSD workshops / stores.



### Liantang / Heung Yuen Wai Boundary Control Point

Both the Government of the Hong Kong Special Administrative Region (HK Government) and Shenzhen Municipal People's Government (SZ Government) have long recognized the need to enhance cross-boundary transport infrastructures for long-term economic growth and further regional co-operation. In September 2008, the two Governments decided to implement the new BCP, which had commenced operation for goods vehicles on 26 August 2020.

The new BCP will serve cross-boundary goods vehicles and passengers traveling between HK and SZ East, Huizhou, GD East, Jiangxi and Fujian. It is estimated that by 2030, the new BCP will have about 20,600 vehicular trips and 30,700 passenger

trips per day.

The new BCP comprises the following:

1. Customs, immigration and quarantine facilities of HK and SZ are located within their respective territory.

2. An integrated passenger hall building over the SZ River provides the greatest convenience for travelers.

3. A two-storey design is adopted to minimize land requirement.

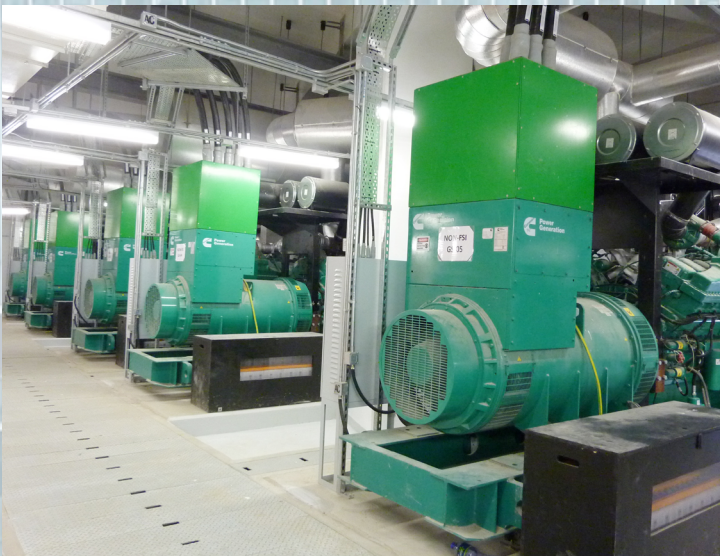
4. Facilities for goods vehicles and public transport interchange are on the ground floor (about 18.3 hectares on HK side). The upper floor, which is about one-fourth of the size of the ground level (about 4.6 hectares on HK side), will serve passengers, private cars and coaches.

# Recently Completed Projects

## CUHK Medical Centre

The CUHK Medical Centre provides a full range of medical services and serves as a key base for clinical research, healthcare education and training. The aims are serving the people of HK, enhancing the quality of teaching and research, and contributing to the healthcare system of HK. The hospital is conveniently located next to the MTR University station and the public transport interchange.

The CUHK Medical Centre covers a total construction floor area of 100,000m<sup>2</sup> and will provide around 600 beds. It will accommodate comprehensive inpatient and diagnostic treatment facilities including Integrated outpatient unit, Chinese Medical unit, Cardiology, Intensive Disease & Endoscopy Center, Radiotherapy, Operative Department, Diagnostic & Imaging, Laboratories Pharmacy, SSD and other supporting facilities.



# Recently Completed Projects



## Emerald Bay - TMTL 500 Kwun Chui Road, Area 56, Tuen Mun

**T**he project comprises of 4 nos. 22-storeys residential towers with 1,960 nos. flat units, 22 nos. detached houses, a Clubhouse and a basement car park.

It targets to obtain the OP Certificate by end 2020 and the project will be completed by 2021.



## Hengqin New District Comprehensive Development

**S**hun Tak Holdings Limited's integrated landmark development on Hengqin Island provide a total GFA of about 207,797m<sup>2</sup>. comprises office, hotel, commercial and serviced apartments.

The land parcel is located at a prime location with direct access to the port and commercial facilities at the border bridging Hengqin and Macau. It boasts superior connectivity, to be served by the Hengqin and Macau light rails, together with the extension of Guangzhou-Zhuhai Intercity-Rail in the future. Rising at an arterial junction and only a few minutes' drive away from the Cotai strip where large scale ultra-luxurious gaming resorts and hotels are rapidly springing, the new development holds promising potential, benefiting from both the dynamic expansion momentum of Macau and the clear strategic positioning of Hengqin in developing leisure tourism, hospitality, cultural creativity, business and financial services, as well as education and healthcare.



## Nova City Phase 5, Macau

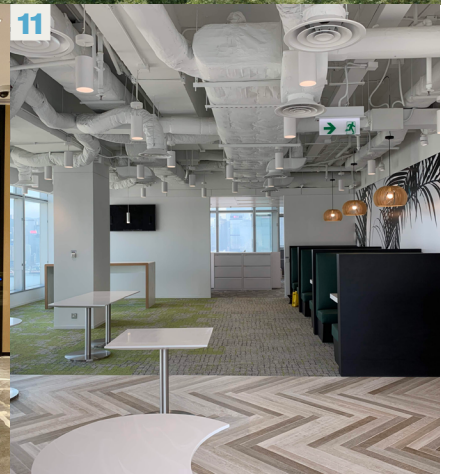
**N**ova City Phase 5, comprises over 214,000m<sup>2</sup> of residential units in eight towers sitting above a large-scale lifestyle shopping centre with gross floor area of over 60,000m<sup>2</sup>. It houses a diverse range of tenants including supermarkets, dining outlets, leisure retail and entertainment components to provide unparalleled convenience and comfort to become the gathering hub of the entire Tai-pa community.



**Awards  
2019 - 2020**



- 1. One Taikoo Place**
  - a) BEAM Plus Platinum 2020
  - b) USGBC - LEED Platinum 2020
  - c) GBA - Grand Award in New Buildings Category (Completed Projects - Commercial Building) 2019
  - d) WELL Core & Shell Certification - Platinum 2019
- 2. Grade A Office & Retail Development at NKIL 6556**
  - a) USGBC - LEED Platinum 2019
  - b) WELL - Pre-certification - Platinum 2019
  - c) GBA - Grand Award in New Building Category (Project Under Construction and / or Design - Commercial Building) 2019
  - d) China Green Building Design Label - 3 Star Rating 2019
- 3. One Hennessy**
  - GBA - Finalist in New Buildings Category (Completed Projects - Commercial Building) 2019
- 4. Ocean Terminal Extension**
  - GBA - Finalist in Existing Buildings Category (Completed Projects - Commercial Building) 2019
- 5. Hong Kong Children's Hospital**
  - BEAM Plus New Buildings Final Platinum Rating 2020
- 6. Cullinan West Development**
  - BEAM Plus New Buildings Final Gold Rating 2020



**7. Tai Kwun - Centre for Heritage and Arts**

- a) GBA - Merit Award in Existing Building Category (Completed Projects - Institutional Building) 2019
- b) UNESCO Asia-Pacific Awards - Award of Excellence (Cultural Heritage Conservation) 2019
- c) HKIA Merit Award of Hong Kong - Mixed-Use(es) Building 2019
- d) HKIA Special Architectural Award - Heritage & Adaptive Re-use 2019

**8. CUHK - Chung Chi Student Development Complex**

GBA - Finalist in New Buildings Category (Projects Under Construction and / or Design - Institutional Building) 2019

**9. CUHK Medical Centre**

GBA - Finalist in New Building Category (Project Under Construction and / or Design - Commercial Building) 2019

**10. JPMC Quayside Hong Kong**

USGBC - LEED Gold 2020

**11. UBS HK Fitting Out Project at 21/F, One Peking Road**

USGBC - LEED Gold 2019

**12. Port 33**

GBA - Finalist in New Buildings Category (Completed Projects - Commercial Building) 2019



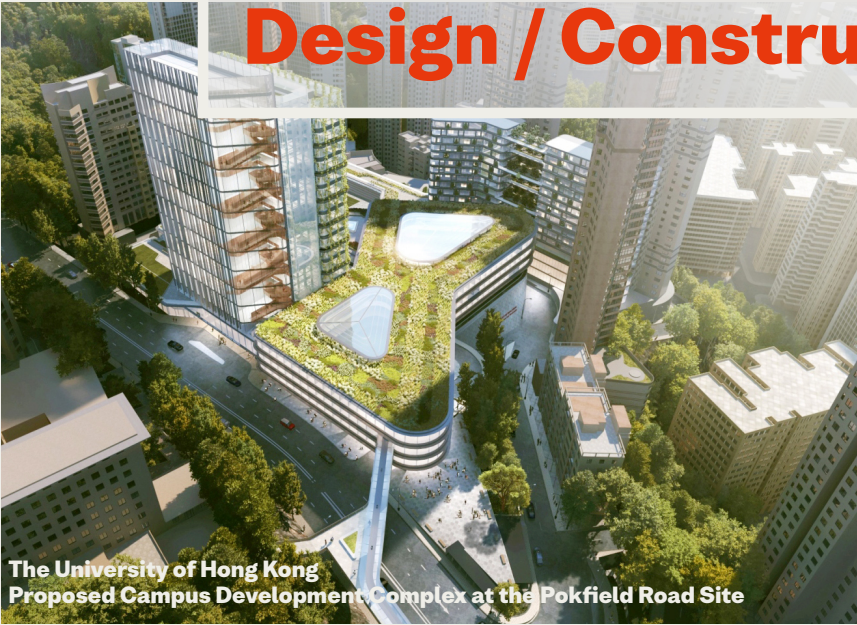
**Immigration Headquarters in Area 67, Tseung Kwan O**



**Hong Kong Housing Society Rental Housing Project at Hung Shui Kiu Phase 1A**



**Project Under Design / Construction**



**The University of Hong Kong Proposed Campus Development Complex at the Pokfield Road Site**

**The Hong Kong Jockey Club Redevelopment of Pokfulam Public Riding School**

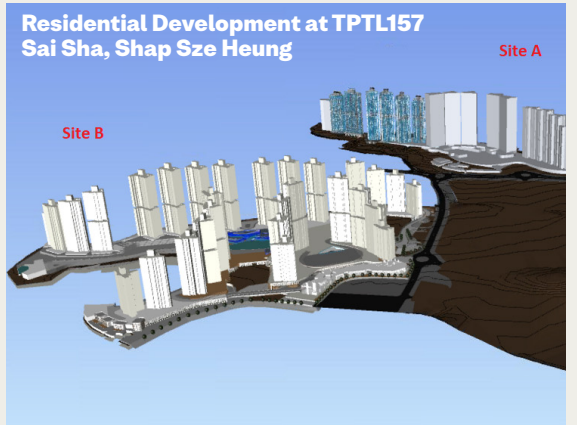


**A Purpose-built Multi-Welfare Services Complex in Area 29 Kwu Tung North**



**MAXIM'S New Factory in Tai Po Industrial Estate**





J. Roger Preston Limited

Level 11, Tower 1 Millennium City 1, 388 Kwun Tong Road, Kowloon, Hong Kong

• T (852) 2590 9333 • F (852) 2590 9897 • E info@jrp-group.com • www.jrp-group.com

HONG KONG | BEIJING | SHANGHAI | SHENZHEN | MACAU | SINGAPORE | KUALA LUMPUR | HO CHI MINH CITY